

連結営業成績

Consolidated Operating Results



(単位 : 百万円 Unit: Million Yen)

	FY2005 実績 Actual	FY2006 実績 Actual	FY2007 実績 Actual	FY2008 実績 Actual	FY2009 実績 Actual	FY2010 計画 Budget
売上高 Net Sales	153,058 (100.0%)	166,745 (100.0%)	187,302 (100.0%)	166,749 (100.0%)	152,671 (100.0%)	170,000 (100.0%)
営業利益 Operating Profit	14,902 (9.7%)	16,670 (10.0%)	19,781 (10.6%)	10,217 (6.1%)	10,851 (7.1%)	13,500 (7.9%)
経常利益 Ordinary Profit	15,735 (10.3%)	17,378 (10.4%)	19,578 (10.5%)	8,804 (5.3%)	10,613 (7.0%)	13,500 (7.9%)
当期純利益 Net Income	9,353 (6.1%)	10,497 (6.3%)	11,658 (6.2%)	5,441 (3.3%)	5,524 (3.6%)	8,000 (4.7%)
総資産 Total Assets	133,440 (100.0%)	144,073 (100.0%)	158,147 (100.0%)	136,907 (100.0%)	153,425 (100.0%)	159,200 (100.0%)
純資産 Net Assets	83,925 (62.9%)	99,846 (69.3%)	110,032 (69.6%)	103,248 (75.4%)	109,095 (71.1%)	114,900 (72.2%)
1株当り当期純利益 Earnings per Share	186.02 (Yen)	215.09 (Yen)	239.95 (Yen)	112.00 (Yen)	113.72 (Yen)	164.67 (Yen)
1株当り純資産 Net Assets per Share	1,712.80 (Yen)	1,907.92 (Yen)	2,102.64 (Yen)	1,999.38 (Yen)	2,115.38 (Yen)	2,234.85 (Yen)
自己資本当期純利益率 ROE	11.7 (%)	11.9 (%)	12.0 (%)	5.5 (%)	5.5 (%)	7.6 (%)
総資本当期純利益率 ROA	7.3 (%)	7.6 (%)	7.7 (%)	3.7 (%)	3.8 (%)	5.1 (%)

※2005年度以前については「純資産」「1株当り純資産」「ROE」の数値については、従来の様式で記載しております。

※Figures shown for Net Assets, Net Assets per Share and ROE by FY2005 are presented in the previous format.

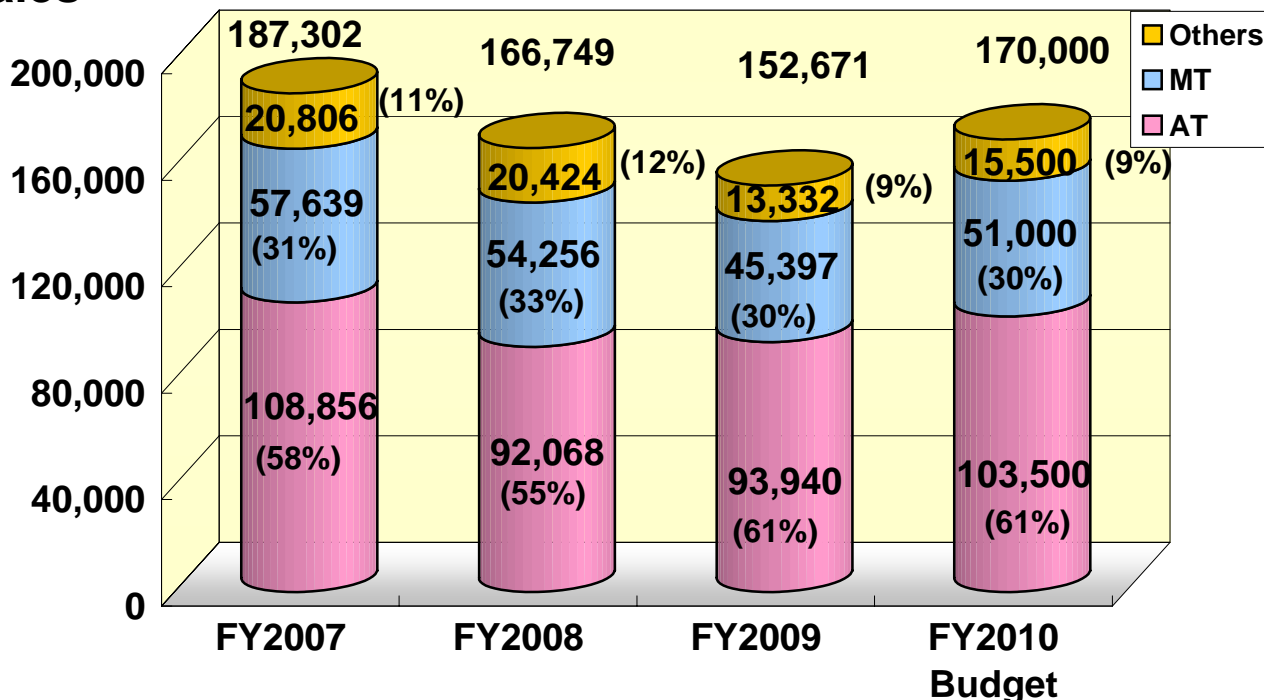
連結事業セグメント別業績

Consolidated Operating Results by Division

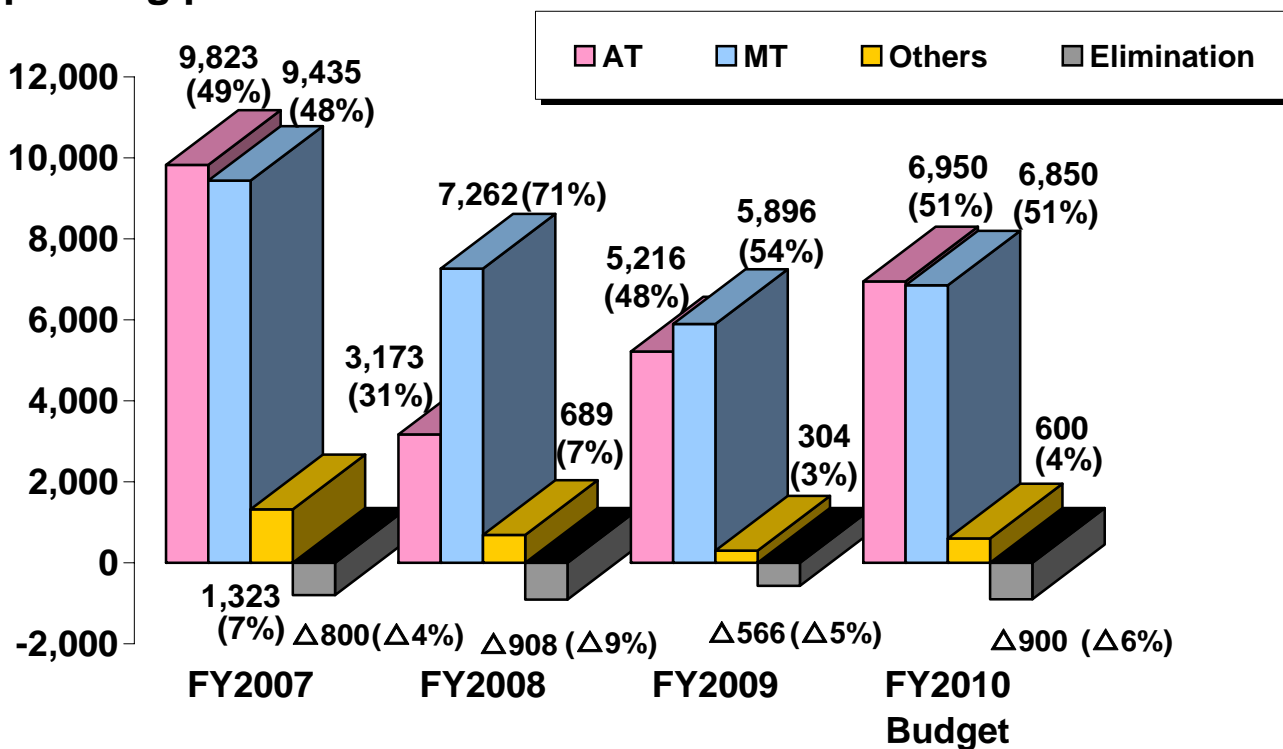


Sales

(単位: 百万円 Unit: million Yen)



Operating profit

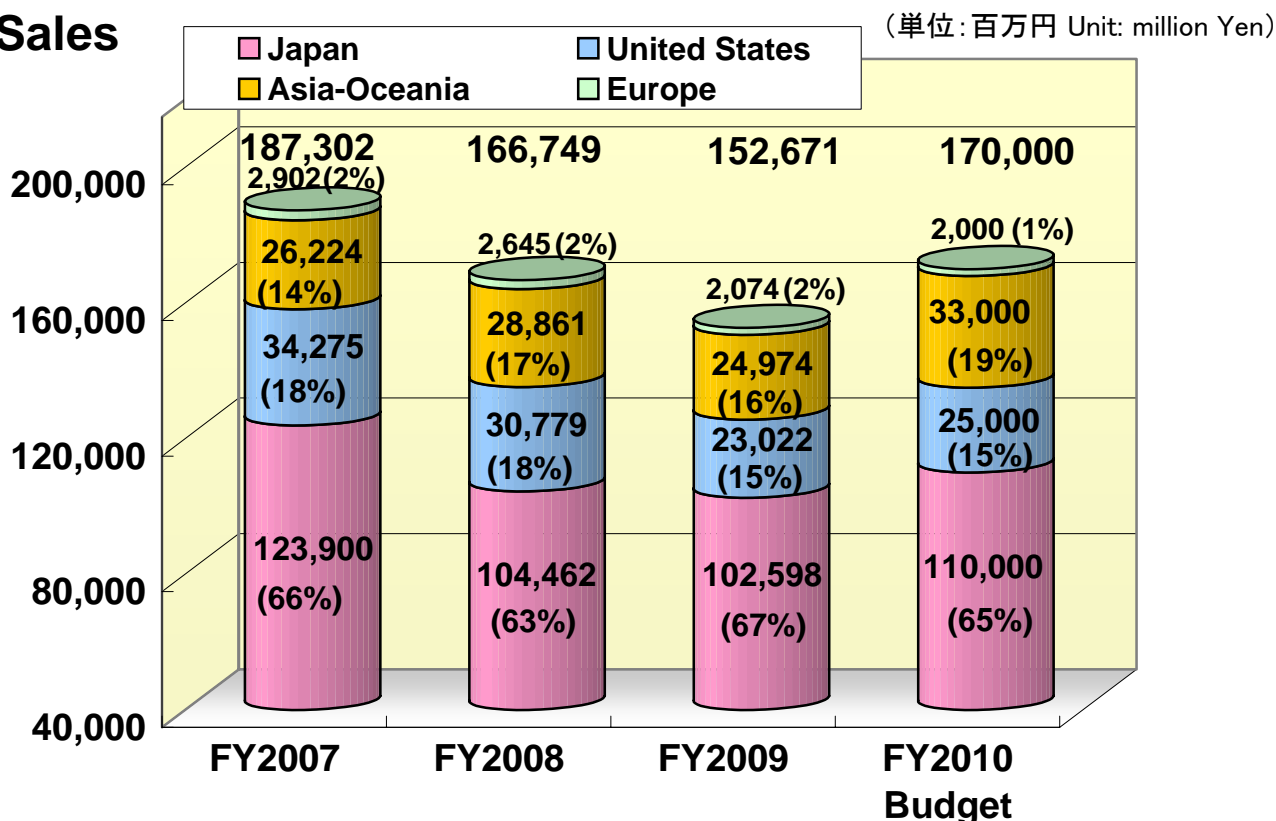


連結所在地セグメント別業績

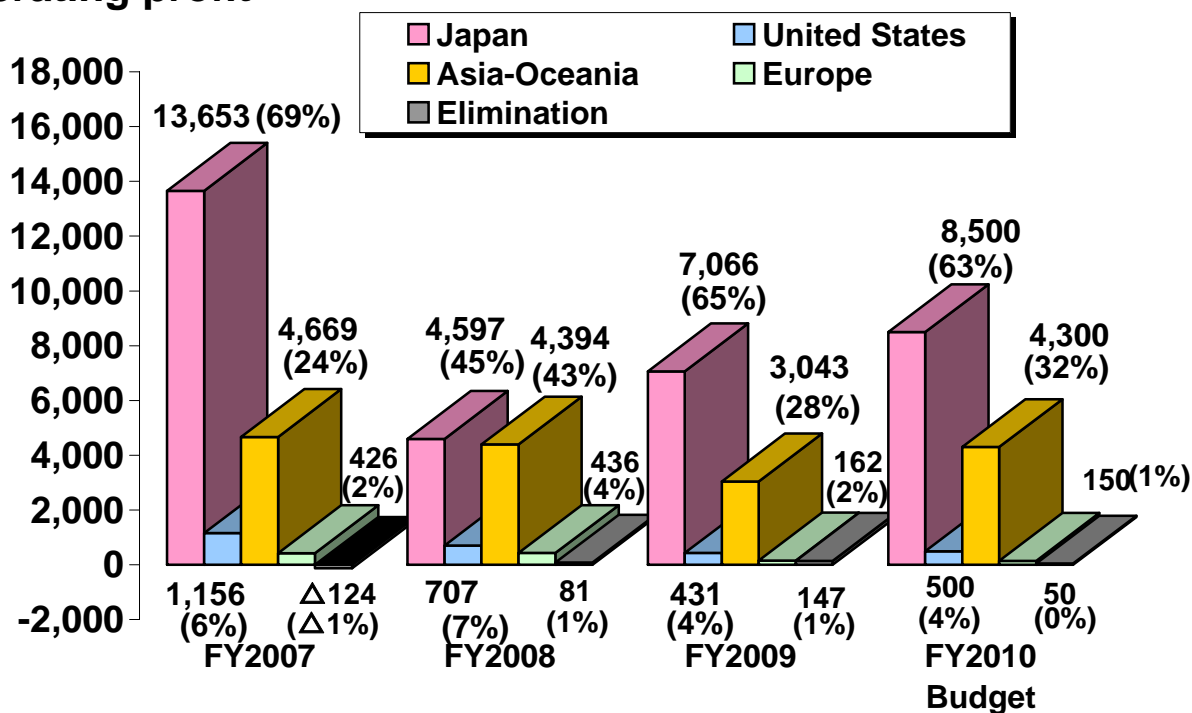
Consolidated Operating Results by Geographic Area



Sales



Operating profit



連結貸借対照表

Consolidated Balance Sheet



(単位: 百万円 Unit: million Yen)

	2009年3月末 実績 Mar.2009 Actual		2010年3月末 実績 Mar.2010 Actual		増減 Change	
流動資産 Current Assets	59,871	43.7%	81,477	53.1%	21,606	36.1%
現金及び預金 Cash and Deposits	16,403	12.0%	26,242	17.1%	9,838	60.0%
受取手形及び売掛金 Trade Receivable	23,830	17.4%	33,405	21.8%	9,574	40.2%
棚卸資産 Inventories	13,665	10.0%	16,455	10.7%	2,789	20.4%
繰延税金資産 Deferred Tax Assets	2,016	1.5%	2,416	1.6%	400	19.8%
短期貸付金 Short-term Loans	644	0.5%	638	0.4%	(5)	(0.9%)
その他流動資産 Other Current Assets	3,415	2.5%	2,406	1.6%	(1,008)	(29.5%)
貸倒引当金 Allowance for Doubtful Account	(103)	(0.1%)	(86)	(0.1%)	17	(16.7%)
固定資産 Fixed Assets	77,036	56.3%	71,947	46.9%	(5,088)	(6.6%)
有形固定資産 Tangible Fixed Assets	70,139	51.2%	64,986	42.4%	(5,153)	(7.3%)
建物及び構築物 Buildings, Structures	20,059	14.7%	20,807	13.6%	747	3.7%
機械装置及び運搬具 Machinery, Vehicles	29,176	21.3%	30,105	19.6%	929	3.2%
工具器具備品 Tools, Furniture, etc.	3,938	2.9%	3,746	2.4%	(192)	(4.9%)
土地 Land	8,009	5.9%	8,274	5.4%	265	3.3%
建設仮勘定 Construction in Progress	8,956	6.5%	2,051	1.3%	(6,904)	(77.1%)
無形固定資産 Intangible Assets	936	0.7%	1,026	0.7%	89	9.6%
投資等 Investments	5,959	4.4%	5,935	3.9%	(24)	(0.4%)
投資有価証券 Investment in Securities	1,491	1.1%	1,775	1.2%	284	19.0%
長期貸付金 Long-term Loan	139	0.1%	123	0.1%	(15)	(11.4%)
繰延税金資産 Deferred Tax Assets (Fixed)	2,744	2.0%	2,793	1.8%	48	1.8%
その他投資等 Other Investments	1,583	1.2%	1,242	0.8%	(341)	(21.5%)
資産合計 Total Assets	136,907	100.0%	153,425	100.0%	16,518	12.1%

(単位:百万円 Unit: million Yen)

	2009年3月末 実績 Mar.2009 Actual		2010年3月末 実績 Mar.2010 Actual		増減 Change	
流動負債 Current Liabilities	24,114	17.6%	32,910	21.5%	8,795	36.5%
支払手形及び買掛金 Trade Payable	9,932	7.3%	14,634	9.5%	4,701	47.3%
短期借入金 Short-Term Borrowings	4,482	3.3%	4,721	3.1%	239	5.3%
未払費用 Accrued Expenses	4,492	3.3%	5,186	3.4%	694	15.4%
未払法人税等 Accrued income Taxes	463	0.3%	3,901	2.5%	3,438	741.8%
その他の流動負債 Other Current Liabilities	4,744	3.5%	4,466	2.9%	(277)	(5.9%)
固定負債 Fixed Liabilities	9,543	7.0%	11,418	7.4%	1,875	19.6%
長期借入金 Long-Term Debt	2,627	1.9%	3,098	2.0%	471	18.0%
退職給付引当金 Reserve for Retirement Benefits	5,561	4.1%	6,105	4.0%	544	9.8%
その他の固定負債 Other Fixed Liabilities	1,355	1.0%	2,214	1.4%	859	63.4%
負債合計 Total Liabilities	33,658	24.6%	44,329	28.9%	10,670	31.7%
株主資本 Owners' Equity	103,374	75.5%	107,926	70.3%	4,551	4.4%
資本金 Capital Stock	8,284	6.1%	8,284	5.4%	-	-
資本剰余金 Capital Reserve	7,540	5.5%	7,540	4.9%	-	-
利益剰余金 Retained Earnings	87,587	64.0%	92,140	60.1%	4,552	5.2%
自己株式 Treasury Stock	(37)	(0.0%)	(39)	(0.0%)	(1)	4.0%
評価・換算差額金等 Valuation and Translation Adjustments	(6,240)	(4.6%)	(5,158)	(3.4%)	1,082	(17.3%)
少数株主持分 Minority Interests	6,114	4.5%	6,327	4.1%	213	3.5%
純資産合計 Total Net Assets	103,248	75.4%	109,095	71.1%	5,847	5.7%
負債純資産合計 Total Liabilities & Net Assets	136,907	100.0%	153,425	100.0%	16,518	12.1%

連結損益計算書

Consolidated Profit & Loss Statement



(単位:百万円 Unit: Million Yen)

	2008年度実績 FY2008 Actual		2009年度実績 FY2009 Actual		増減 Change	
売上高 Net Sales	166,749	100.0%	152,671	100.0%	(14,078)	(8.4%)
売上原価 Cost of Sales	134,731	80.8%	122,375	80.2%	(12,356)	(9.2%)
販売費及び一般管理費 SGA Expenses	21,800	13.1%	19,444	12.7%	(2,355)	(10.8%)
営業利益 Operating Profit	10,217	6.1%	10,851	7.1%	633	6.2%
営業外収益 Non-Operating Income	1,058	0.6%	1,058	0.7%	0	(0.0%)
受取利息及び配当金 Interest & Dividend Income	199	0.1%	76	0.1%	(123)	(61.7%)
持分法による投資利益 Income on Equity Method	-	-	20	0.0%	20	-
為替差益 Foreign Exchange Gain, net	-	-	101	0.1%	101	-
その他営業外収益 Other Income	858	0.5%	860	0.6%	2	0.2%
営業外費用 Non-Operating Expenses	2,471	1.5%	1,295	0.8%	(1,175)	(47.6%)
支払利息 Interest Expenses	294	0.2%	334	0.2%	39	13.4%
為替差損 Foreign Exchange Loss, net	972	0.6%	-	-	(972)	(100.0%)
その他営業外費用 Other Expenses	1,203	0.7%	961	0.6%	(241)	(20.1%)
経常利益 Ordinary Profit	8,804	5.3%	10,613	7.0%	1,808	20.5%
特別利益 Special Income	-	-	134	0.1%	134	-
特別損失 Special Loss	310	0.2%	571	0.4%	260	84.1%
税金等調整前当期純利益 Income before Taxes	8,494	5.1%	10,176	6.7%	1,681	19.8%
法人税・住民税・事業税 Provision Income Taxes	2,445	1.5%	4,497	2.9%	2,052	83.9%
法人税等調整額 Adjustment for Income Taxes	37	0.0%	(35)	(0.0%)	(72)	(195.3%)
少数株主損益 Minority Interest	570	0.3%	189	0.1%	(381)	(66.8%)
当期純利益 Net Income	5,441	3.3%	5,524	3.6%	83	1.5%

連結キャッシュフロー計算書

Consolidated Statement of Cash Flows



(単位：百万円 Unit: Million Yen)

	2008年度実績 FY2008 Actual	2009年度実績 FY2009 Actual	増減 Change
税金等調整前当期純利益 Income before Taxes	8,494	10,176	1,681
減価償却費 Depreciation & Amortization	12,312	11,994	(318)
退職給付引当金の増加(減少) Increase (Decrease) in Reserve for Retirement Benefits	(157)	544	701
売上債権の減少(増加) Decrease (Increase) in Trade Receivables	11,491	(8,587)	(20,079)
たな卸資産の減少(増加) Decrease (Increase) in Inventories	(245)	(1,715)	(1,469)
仕入債務の増加(減少) Increase (Decrease) in Trade Payables	(3,696)	3,145	6,841
法人税等支払額 Income Taxes Paid	(7,211)	546	7,758
その他 Other, net	(917)	3,410	4,327
営業活動によるキャッシュフロー Net Cash Provided by Operating Activities	20,069	19,514	(555)
定期預金の減少(増加) Decrease (Increase) in Time Deposits, net	652	(273)	(925)
有形固定資産の取得による支出 Acquisitions of Plant & Equipment	(21,417)	(7,565)	13,852
投資有価証券の取得 Acquisitions of Securities, net	(11)	(10)	1
その他 Other, net	(291)	(745)	(454)
投資活動によるキャッシュフロー Net Cash used in Investing Activities	(21,068)	(8,593)	12,474
短期借入金の増加(減少) Increase (Decrease) in Short Term Borrowings, net	(888)	(403)	484
長期借入金の増加(減少) Increase (Decrease) in Long Term Debt, net	880	(41)	(922)
自己株式の取得による支出 Payment for Treasury Stock	(1)	(1)	0
配当金の支払 Cash Dividends Paid	(2,816)	(972)	1,844
その他 Other, net	(472)	(444)	28
財務活動によるキャッシュフロー Net Cash used in Financing Activities	(3,299)	(1,863)	1,436
現金及び現金同等物換算差額 Effect of Exchange Rate Changes on Cash & Cash Equivalents	(1,789)	204	1,994
現金及び現金同等物増加(減少)額 Net Increase (Decrease) in Cash & Cash Equivalents	(6,086)	9,262	15,348
現金及び現金同等物期首残高 Cash & Cash Equivalents, Beginning of Year	22,422	16,335	(6,086)
現金及び現金同等物期末残高 Cash & Cash Equivalents, End of Year	16,335	25,597	9,262

単体営業成績

Non-consolidated Operating Results



(単位 : 百万円 Unit: Million Yen)

	FY2005 実績 Actual	FY2006 実績 Actual	FY2007 実績 Actual	FY2008 実績 Actual	FY2009 実績 Actual	FY2010 計画 Budget
売上高 Net Sales	87,096 (100.0%)	93,735 (100.0%)	102,187 (100.0%)	92,291 (100.0%)	88,025 (100.0%)	95,000 (100.0%)
営業利益 Operating Profit	7,177 (8.2%)	7,890 (8.4%)	8,286 (8.1%)	2,481 (2.7%)	4,713 (5.4%)	5,500 (5.8%)
経常利益 Ordinary Profit	8,370 (9.6%)	9,372 (10.0%)	9,604 (9.4%)	4,670 (5.1%)	6,448 (7.3%)	7,000 (7.4%)
当期純利益 Net Income	5,528 (6.3%)	6,177 (6.6%)	6,766 (6.6%)	3,528 (3.8%)	4,356 (4.9%)	5,000 (5.3%)
総資産 Total Assets	84,449 (100.0%)	89,777 (100.0%)	96,333 (100.0%)	86,404 (100.0%)	100,858 (100.0%)	101,900 (100.0%)
純資産 Net Assets	58,245 (69.0%)	61,601 (68.6%)	66,340 (68.9%)	66,760 (77.3%)	70,331 (69.7%)	73,100 (71.7%)
1株当り当期純利益 Earnings per Share	109.47 (Yen)	126.57 (Yen)	139.27 (Yen)	72.64 (Yen)	89.67 (Yen)	102.92 (Yen)
1株当り純資産 Net Assets per Share	1,188.45 (Yen)	1,267.88 (Yen)	1,365.49 (Yen)	1,374.17 (Yen)	1,447.72 (Yen)	1,506.62 (Yen)
1株当り配当金 Dividend per Share	27.00 (Yen)	34.00 (Yen)	50.00 (Yen)	35.00 (Yen)	35.00 (Yen)	40.00 (Yen)
自己資本当期利益率 ROE	9.6 (%)	10.3 (%)	10.6 (%)	5.3 (%)	6.4 (%)	7.0 (%)
総資本当期利益率 ROA	6.7 (%)	7.1 (%)	7.3 (%)	3.9 (%)	4.7 (%)	4.9 (%)

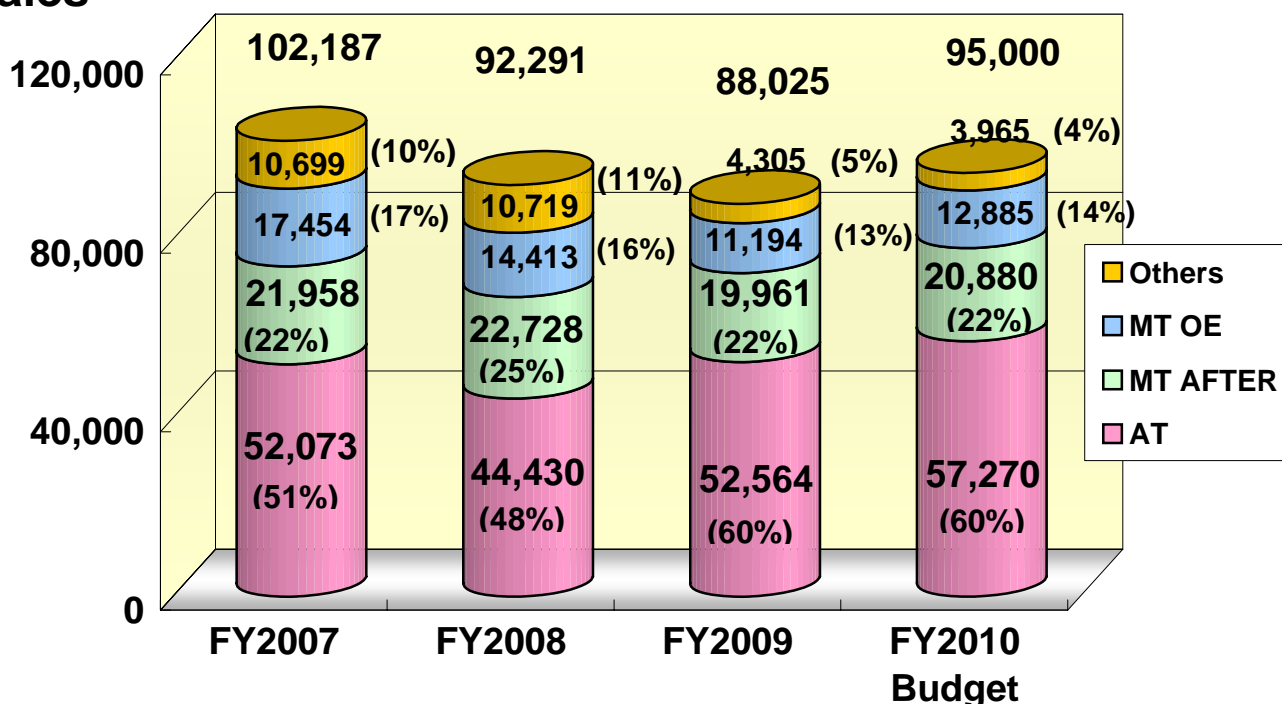
単体事業セグメント別業績

Non-consolidated Operating Results by Division

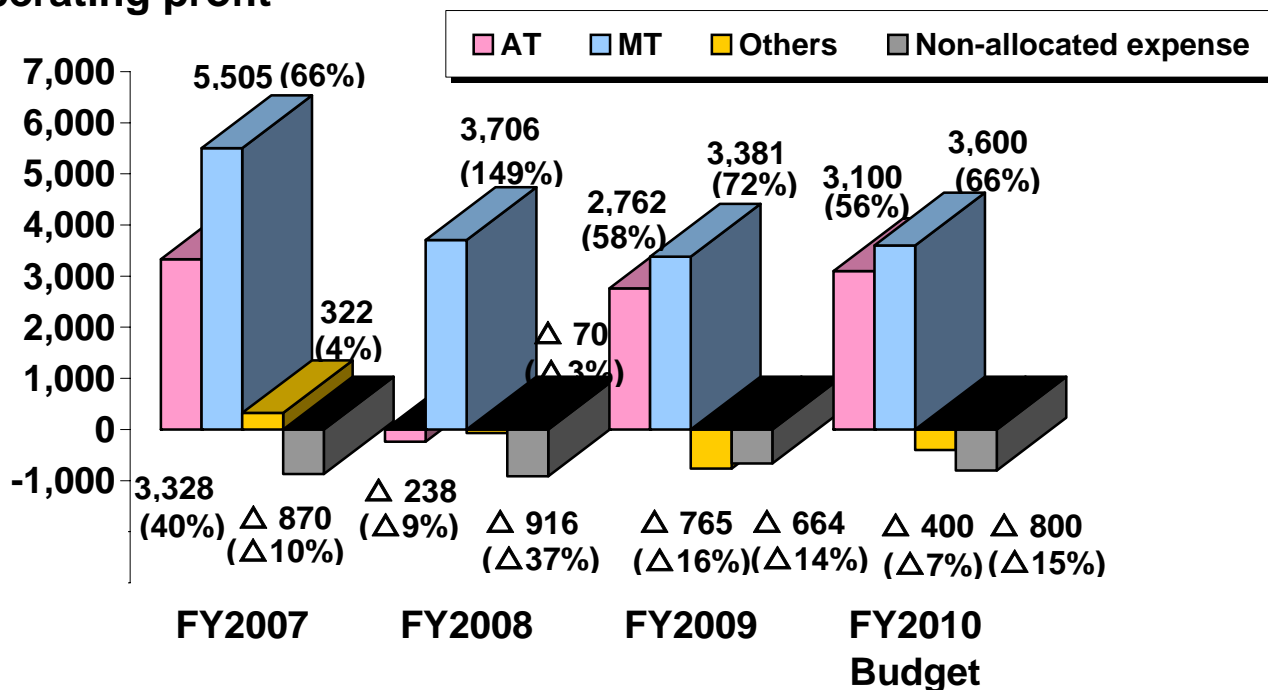


Sales

(単位: 百万円 Unit: million Yen)



Operating profit



Operating Margin	FY2007	FY2008	FY2009	FY2010
Total	8.1%	2.7%	5.4%	5.8%
AT	6.4%	△0.5%	5.3%	5.4%
MT	14.0%	10.0%	10.8%	10.7%
Others	3.0%	△0.7%	△17.8%	△10.1%

単体貸借対照表

Non-Consolidated Balance Sheet



(単位:百万円 Unit: million Yen)

	2009年3月末 実績 Mar.2009 Actual		2010年3月末 実績 Mar.2010 Actual		増減 Change	
流動資産 Current Assets	32,470	37.6%	48,904	48.5%	16,434	50.6%
現金及び預金 Cash and Deposits	9,315	10.8%	18,066	17.9%	8,750	93.9%
受取手形及び売掛金 Trade Receivable	15,371	17.8%	21,245	21.1%	5,874	38.2%
棚卸資産 Inventories	3,214	3.7%	4,750	4.7%	1,536	47.8%
繰延税金資産 Deferred Tax Assets	1,279	1.5%	1,609	1.6%	329	25.8%
短期貸付金 Short-term Loans	2,042	2.4%	2,266	2.2%	223	10.9%
その他流動資産 Other Current Assets	1,690	1.9%	1,405	1.4%	(284)	(16.8%)
貸倒引当金 Allowance for Doubtful Account	(442)	(0.5%)	(439)	(0.4%)	3	(0.7%)
固定資産 Fixed Assets	53,933	62.4%	51,953	51.5%	(1,980)	(3.7%)
有形固定資産 Tangible Fixed Assets	27,603	31.9%	24,104	23.9%	(3,499)	(12.7%)
建物及び構築物 Buildings, Structures	6,591	7.6%	6,164	6.1%	(427)	(6.5%)
機械装置及び運搬具 Machinery, Vehicles	11,390	13.2%	10,537	10.4%	(853)	(7.5%)
工具器具備品 Tools, Furniture, etc.	1,528	1.8%	1,361	1.4%	(166)	(10.9%)
土地 Land	4,926	5.7%	4,926	4.9%	-	-
建設仮勘定 Construction in Progress	3,166	3.6%	1,114	1.1%	(2,052)	(64.8%)
無形固定資産 Intangible Assets	356	0.4%	153	0.2%	(202)	(56.9%)
投資等 Investments	25,973	30.1%	27,695	27.5%	1,721	6.6%
投資有価証券 Investment in Securities	20,205	23.4%	24,037	23.8%	3,831	19.0%
長期貸付金 Long-term Loan	3,816	4.4%	1,592	1.6%	(2,224)	(58.3%)
繰延税金資産(固定) Deferred Tax Assets (Fixed)	1,515	1.8%	1,920	1.9%	404	26.7%
その他投資等 Other Investments	436	0.5%	145	0.1%	(290)	(66.6%)
資産合計 Total Assets	86,404	100.0%	100,858	100.0%	14,453	16.7%

(単位:百万円 Unit: million Yen)

	2009年3月末 実績 Mar.2009 Actual		2010年3月末 実績 Mar.2010 Actual		増減 Change	
流動負債 Current Liabilities	14,688	17.0%	25,190	25.0%	10,502	71.5%
支払手形及び買掛金 Trade Payable	4,527	5.2%	8,563	8.5%	4,036	89.1%
未払金 Accounts Payable	992	1.2%	735	0.7%	(257)	(25.9%)
未払費用 Accrued Expenses	2,681	3.1%	3,292	3.3%	611	22.8%
未払法人税等 Accrued income Taxes	44	0.1%	2,434	2.4%	2,390	5411.6%
預り金 Receipt in Trust	5,811	6.7%	8,892	8.8%	3,080	53.0%
その他の流動負債 Other Current Liabilities	630	0.7%	1,271	1.3%	641	101.9%
固定負債 Fixed Liabilities	4,956	5.7%	5,335	5.3%	379	7.7%
退職給付引当金 Reserve for Retirement Benefits	4,546	5.2%	4,923	4.9%	376	8.3%
その他の固定負債 Other Fixed Liabilities	409	0.5%	412	0.4%	2	0.7%
負債合計 Total Liabilities	19,644	22.7%	30,526	30.3%	10,882	55.4%
株主資本 Owners' Equity	66,624	77.1%	70,007	69.4%	3,383	5.1%
資本金 Capital Stock	8,284	9.6%	8,284	8.2%	-	-
資本剰余金 Capital Reserve	7,540	8.7%	7,540	7.5%	-	-
利益剰余金 Retained Earnings	50,837	58.8%	54,221	53.8%	3,384	6.7%
自己株式 Treasury Stock	(37)	(0.0%)	(39)	(0.0%)	(1)	4.0%
評価・換算差額金等 Valuation and Translation Adjustments	135	0.2%	324	0.3%	188	139.2%
純資産合計 Total Net Assets	66,760	77.3%	70,331	69.7%	3,571	5.4%
負債純資産合計 Total Liabilities & Net Assets	86,404	100.0%	100,858	100.0%	14,453	16.7%

単体損益計算書

Non-Consolidated Profit & Loss Statement



(単位:百万円 Unit: Million Yen)

	2008年度実績 FY2008 Actual		2009年度実績 FY2009 Actual		増減 Change	
総売上高 Net Sales	92,291	100.0%	88,025	100.0%	(4,265)	(4.6%)
売上原価 Cost of Sales	77,835	84.3%	72,766	82.7%	(5,068)	(6.5%)
販売費及び一般管理費 SGA Expenses	11,974	13.0%	10,545	12.0%	(1,429)	(11.9%)
営業利益 Operating Profit	2,481	2.7%	4,713	5.4%	2,231	89.9%
営業外収益 Non-Operating Income	2,948	3.2%	2,172	2.5%	(776)	(26.3%)
受取利息及び配当金 Interest & Dividend Income	2,649	2.9%	1,795	2.0%	(853)	(32.2%)
その他営業外収益 Other Income	298	0.3%	376	0.4%	77	26.0%
営業外費用 Non-Operating Expenses	759	0.8%	436	0.5%	(322)	(42.5%)
支払利息 Interest Expenses	71	0.1%	39	0.0%	(31)	(44.1%)
為替差損 Foreign Exchange Losses	371	0.4%	10	0.0%	(361)	(97.3%)
その他営業外費用 Other Expenses	316	0.3%	386	0.4%	70	22.2%
経常利益 Ordinary Profit	4,670	5.1%	6,448	7.3%	1,778	38.1%
特別利益 Special Income	-	-	134	0.2%	134	-
特別損失 Special Loss	173	0.2%	562	0.6%	388	224.0%
税引前当期純利益 Income before Taxes	4,496	4.9%	6,020	6.8%	1,523	33.9%
法人税・住民税・事業税 Provision Income Taxes	566	0.6%	2,526	2.9%	1,960	345.8%
法人税等調整額 Adjustment for Income Taxes	401	0.5%	(862)	(1.0%)	(1,263)	(315.0%)
当期純利益 Net Income	3,528	3.8%	4,356	4.9%	827	23.4%